

THE GALLERY OF  
**EVERYTHING**

**ANNA ZEMÁNKOVÁ**

**THE SECRET LIVES OF PLANTS**

12.05.24 > 07.07.24

THE GALLERY OF **EVERYTHING**  
4 CHILTERN STREET, LONDON W1

[WWW.GALLEVERY.COM](http://WWW.GALLEVERY.COM) @GALLEVERY  
[GE@GALLEVERY.COM](mailto:GE@GALLEVERY.COM) +44 207 486 8909





THE GALLERY OF  
**EVERYTHING**

THE GALLERY OF **EVERYTHING** PRESENTS **THE SECRET LIVES OF PLANTS**, A COMPENDIUM OF IMAGINED FLORA AND FAUNA, FEATURING THE OTHERWORLDLY BOTANY OF **ANNA ZEMÁNKOVÁ** (1908 – 1986).

THE PROJECT DERIVES ITS TITLE FROM PETER TOMPKINS AND CHRISTOPHER BIRD'S 1973 PUBLICATION, *THE SECRET LIFE OF PLANTS*. PRESENTED AS A *FASCINATING ACCOUNT OF THE PHYSICAL, EMOTIONAL AND SPIRITUAL RELATIONS BETWEEN PLANTS AND MAN*, THE BOOK DESCRIBES NOTIONS OF PLANT SENTIENCE WHICH AT THE TIME WERE BOTH CELEBRATED AND DISMISSED.

**THE SECRET LIVES OF PLANTS** INVITES VIEWERS TO EXPERIENCE ANOTHER ORGANIC STATE, BORN FROM THE COMMUNION BETWEEN SOIL AND SKY.



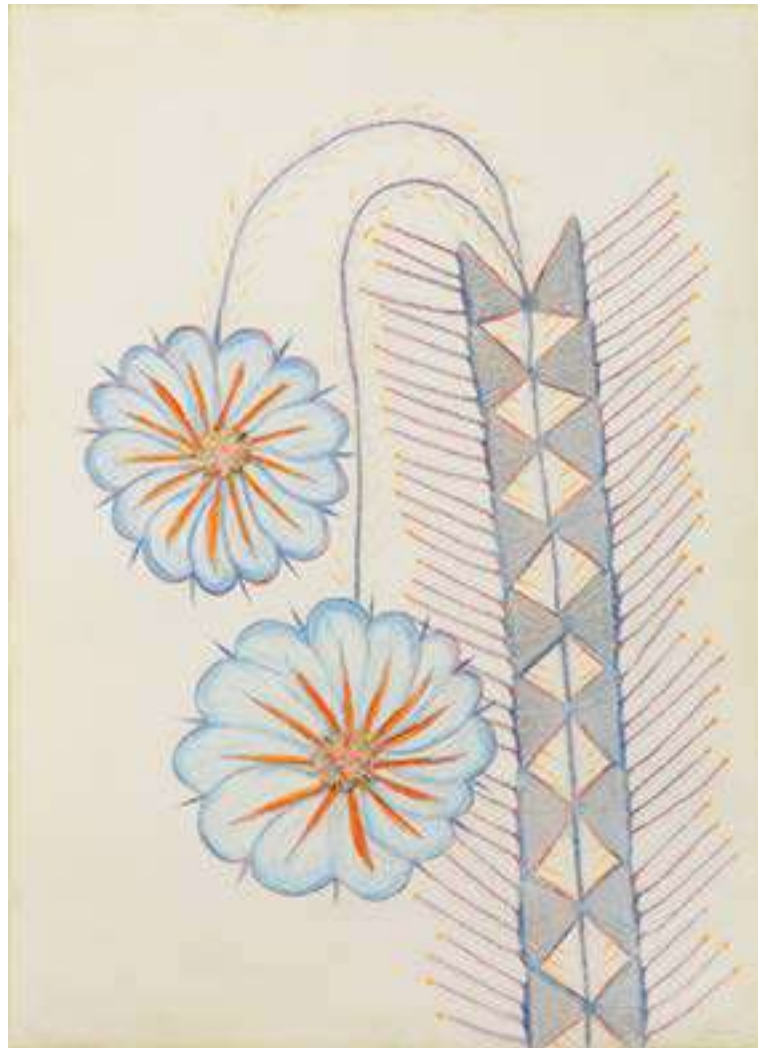
UNTITLED, c1960/65  
PASTEL ON PAPER, 84 x 59.3 CM, 33<sup>1</sup>/<sub>8</sub> x 23<sup>3</sup>/<sub>8</sub> IN  
EXHIBITED: 55TH VENICE BIENNALE, 2013



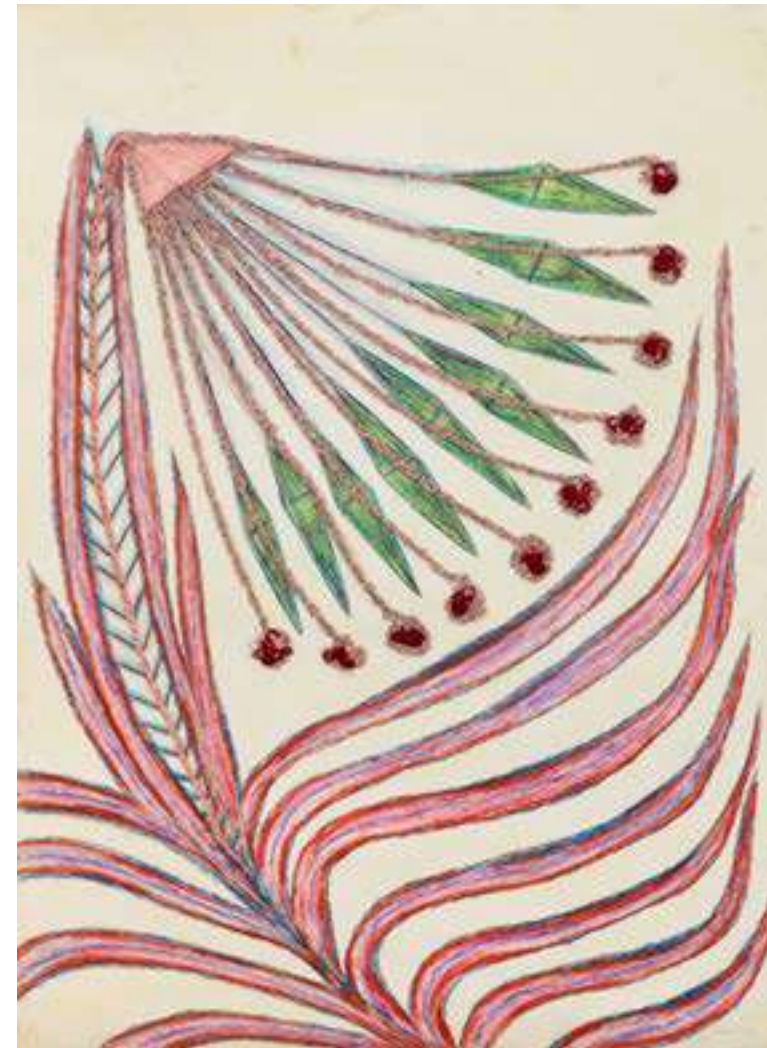
UNTITLED, c1960/65  
PASTEL, INK ON PAPER  
80.5 x 59.5 CM, 31<sup>5</sup>/<sub>8</sub> x 23<sup>3</sup>/<sub>8</sub> IN



ANNA ZEMÁNKOVÁ WAS NOT AN ACTRESS LIKE HER COUSIN, NOR AN OPERA SINGER LIKE HER GRAND-DAUGHTER, NOR A SCULPTOR LIKE HER SON. SHE WAS A HUMBLE HOUSEWIFE WITH A PRIVATE MID-LIFE HOBBY. YET WHAT BEGAN AS A HESITANT REVIVAL OF YOUTHFUL CREATIVITY, BECAME HER WAY TO CHANNEL THE BREADTH, COMPLEXITY AND CONFLICT OF DAILY LIVING.



*UNTITLED, c1970/75*  
THREAD, PASTEL, OIL PASTEL, INK ON PAPER  
62.5 x 44 CM, 24<sup>5</sup>/<sub>8</sub> x 17<sup>3</sup>/<sub>8</sub> IN



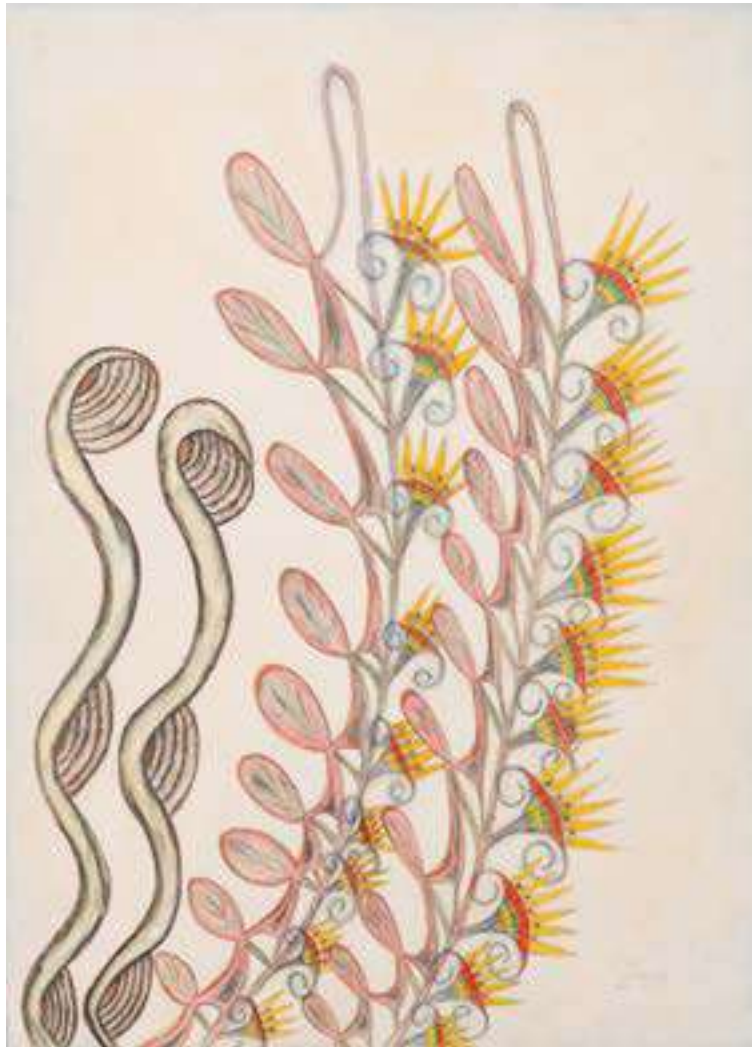
*UNTITLED, c1970/75*  
THREAD, PASTEL, OIL PASTEL, INK ON PAPER  
62.5 x 45 CM, 24<sup>5</sup>/<sub>8</sub> x 17<sup>3</sup>/<sub>4</sub> IN



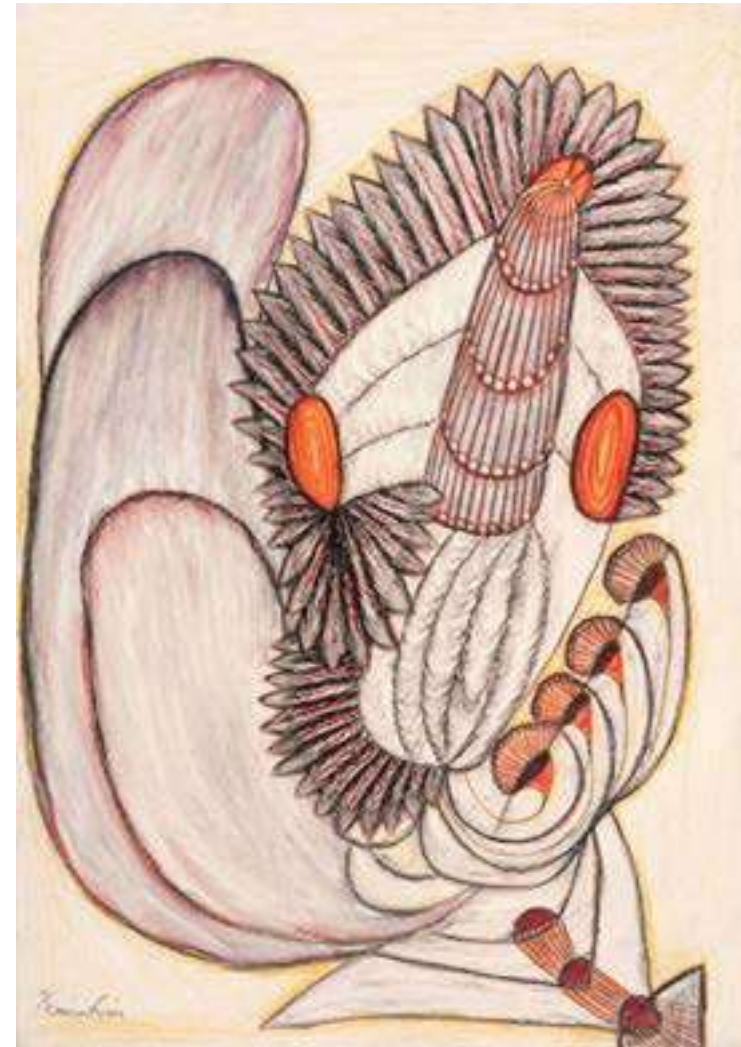
THROUGHOUT THE 1960S AND 1970S **ZEMÁNKOVÁ** DREW. EVERY DAY BEFORE DAWN, INSPIRED BY JANÁČEK AND BEETHOVEN, SHE CHANNELLED HER ENERGIES INTO A NEAR-DEVOTIONAL CUSTOM, FEARING BLACK, FAVOURING YELLOW, AS SHE SKETCHED, SHADED AND STITCHED HER BOTANY INTO BEING.

SHE CALLED HER CREATIONS *FLOWERS*, YET WHAT THEY CONTAINED WAS MORE COMPLEX THAN THE SHORTHAND IMPLIED, THEIR BEAUTY SEDUCING AND RESISTING WITH A POETIC, AUTOMATIC FINALITY.





UNTITLED, c1960/65  
PASTEL, OIL PASTEL, INK ON PAPER  
62.5 x 45 CM, 24<sup>5</sup>/<sub>8</sub> x 17<sup>3</sup>/<sub>4</sub> IN



UNTITLED, c1960/65  
PASTEL, INK ON PAPER, 61 x 43 CM, 24<sup>1</sup>/<sub>8</sub> x 17<sup>1</sup>/<sub>8</sub> IN  
EXHIBITED: 55TH VENICE BIENNALE, 2013

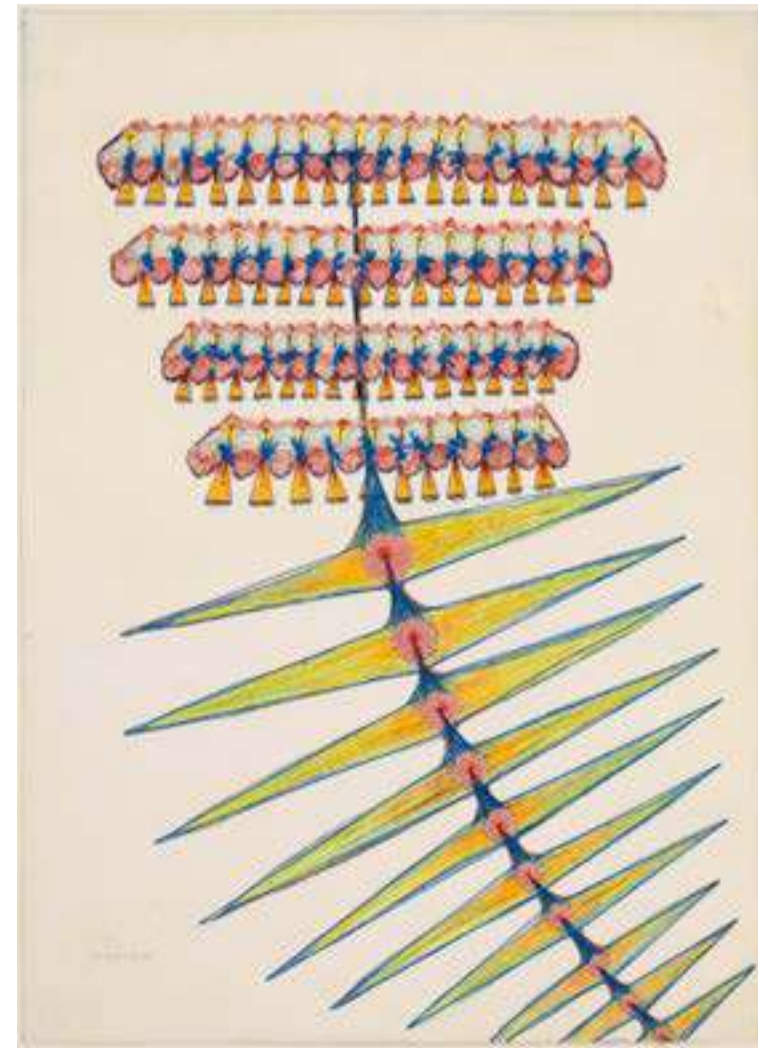


LOCAL EXHIBITIONS INTRODUCED HER TO THE CZECH CREATIVE COMMUNITY. ARTIST JIŘÍ ANDERLE, FILMMAKER JAN ŠVANKMAJER AND PLAYWRIGHT VÁCLAV HAVEL BECAME COLLECTORS. THE MEDIUMISTIC OVERTONES OF HER WORK ATTRACTED ARTIST ARNULF RAINER AND THE COLLECTION DE L'ART BRUT IN LAUSANNE. YET FOR MOST OUTSIDE THE EASTERN BLOCK, ZEMÁNKOVÁ REMAINED UNKNOWN AND UNSEEN — A LITERAL *OUTSIDER*.

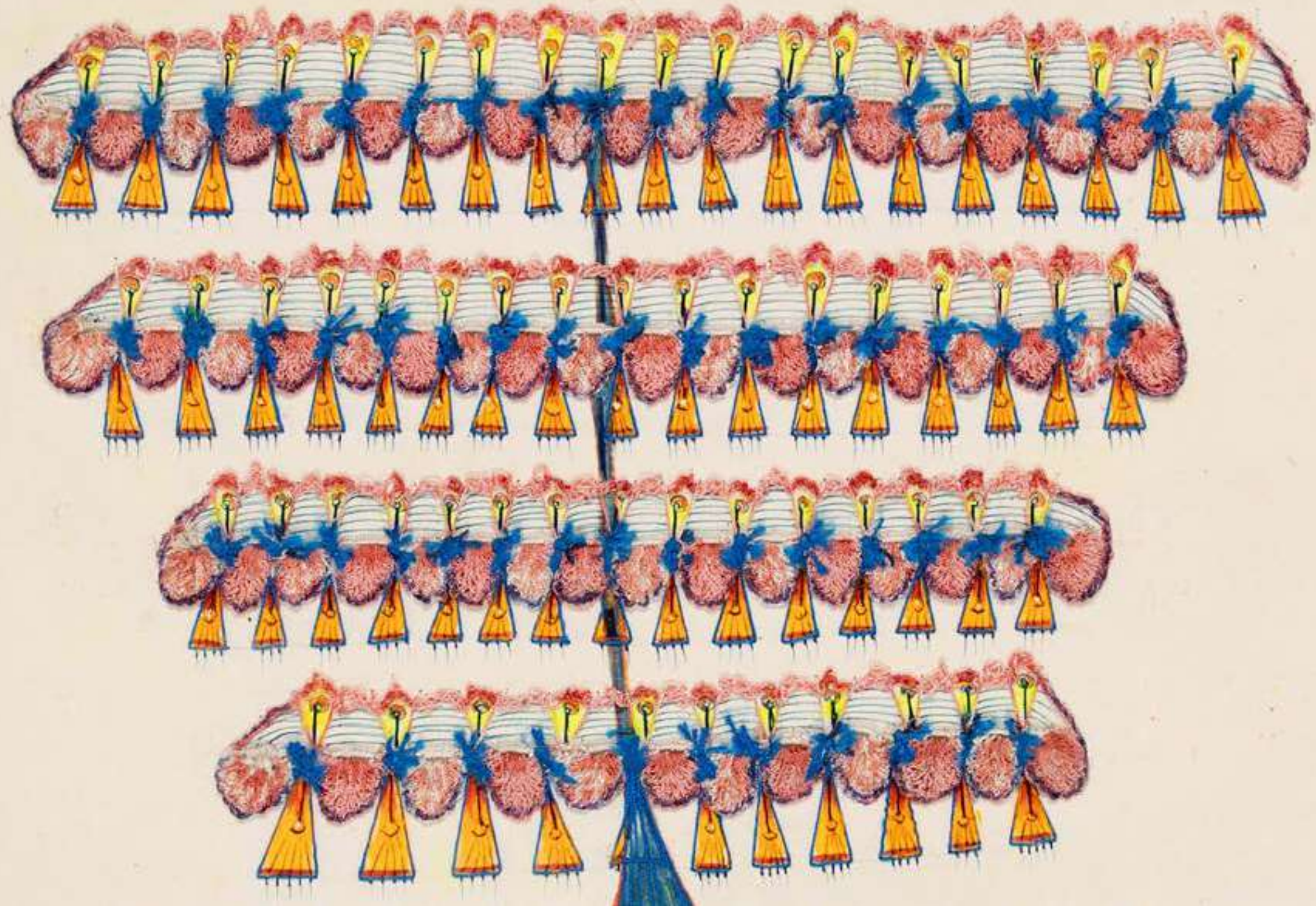
EVERYTHING CHANGED IN 2011 WHEN CURATOR MASSIMILIANO GIONI FEATURED ZEMÁNKOVÁ IN *OSTALGIA* AT THE NEW MUSEM IN NEW YORK. TWO YEARS LATER HE INSTALLED OVER A DOZEN WORKS ON PAPER IN THEIR OWN GALLERY IN *THE ENCYCLOPEDIC PALACE* AT THE 55TH VENICE BIENNALE IN 2013.



*UNTITLED*, c1960/65  
THREAD, PASTEL, OIL PASTEL, INK ON PAPER  
62 x 45.5 CM, 24<sup>3</sup>/<sub>8</sub> x 17<sup>3</sup>/<sub>4</sub> IN



*UNTITLED*, c1970/75  
THREAD, PASTEL, OIL PASTEL, INK ON PAPER  
62 x 45 CM, 24<sup>3</sup>/<sub>8</sub> x 17<sup>3</sup>/<sub>4</sub> IN



THE GALLERY OF EVERYTHING

ANNA ZEMÁNKOVÁ  
(1908-1986)

IT IS NO COINCIDENCE THAT ZEMÁNKOVÁ REMINDS US OF THE PIONEERS OF 20TH-CENTURY WOMEN'S ART. THE GHOSTS LOOM LARGE, BE THEY GEORGIA O'KEEFE, LOUISE BOURGEOIS OR UNICA ZURN. THEY REMIND US THAT THE INVISIBILITY OF THIS GIFTED MAKER, BORN IN ANOTHER TIME AND PLACE, ENABLED AND URGENT, EXPANSIVE PRACTICE TO FLOURISH, UNINTERRUPTED BY THE DEMANDS OF ART.



*UNTITLED*, c1960  
PASTEL ON PAPER, 80 x 59.5 CM, 31½ x 23¾ IN  
EXHIBITED: 55TH VENICE BIENNALE, 2013



*UNTITLED*, c1965/70  
PASTEL ON PAPER  
84 x 59.5 CM, 31½ x 23¾ IN





THE GALLERY OF **EVERYTHING**

**ANNA ZEMÁNKOVÁ**  
(1908–1986)

TODAY, CRITICS DESCRIBE **ZEMÁNKOVÁ**'S WORK AS AN ILLUSTRATED INNER LIFE, REplete WITH PSYCHIC SYMBOLS AND EROTIC METAPHORS. FOR THE ARTIST HERSELF, THE TRUTH WAS AS SIMPLE AS IT WAS PROFOUND:

*I SEE SOMETHING, A SORT OF DEEP FEELING INSIDE.  
IT STAYS WITH ME AND LATER I PUT IT ON TO PAPER.*

**ANNA ZEMÁNKOVÁ**, ARTIST



UNTITLED, c1965/70  
PASTEL ON PAPER  
88 x 62 CM, 34<sup>5</sup>/<sub>8</sub> x 24<sup>3</sup>/<sub>8</sub> IN



*UNTITLED, c1965/70*  
PASTEL ON PAPER  
45 x 62 CM, 17<sup>3</sup>/<sub>4</sub> x 24<sup>3</sup>/<sub>8</sub> IN





THE GALLERY OF **EVERYTHING**  
4 CHILTERN STREET, LONDON W1

THE GALLERY OF **EVERYTHING** IS DEDICATED TO  
ARTISTS AND MAKERS BEYOND THE CULTURAL  
MAINSTREAM.

THE GALLERY DISPLAYS ALTERNATIVE AND NON-  
ACADEMIC ART FROM THE 19TH CENTURY TO THE  
PRESENT DAY.

PROJECTS FEATURE SELF-TAUGHT, ART BRUT,  
SPIRITUALIST AND VERNACULAR MATERIAL, ALONGSIDE  
CONTEMPORARY ART BY CREATORS OF EVERY COLOUR,  
CLASS, GENDER, RACE AND NEUROLOGY.

FOR MORE INFORMATION, PLEASE EMAIL  
**GE@GALLEVERY.COM**.

**WWW.GALLEVERY.COM @GALLEVERY**  
**GE@GALLEVERY.COM +44 207 486 8909**

