

THE GALLERY OF
EVERYTHING

AT **FRIEZE MASTERS**
15TH TO 20TH OCTOBER 2013
REGENTS PARK, LONDON NW1

THE GALLERY OF **EVERYTHING** ANNOUNCES ITS PARTICIPATION IN **FRIEZE MASTERS** WITH TWO RARE BODIES OF WORK PRESENTED FOR THE FIRST TIME IN THE UK.

ANNA ZEMÁNKOVÁ

1908-1986 (MORAVIA)

HER DRAWINGS HAVE THE DEPTH AND COMPLEXITY OF STRANGE BIOLOGICAL SPECIMENS (FORMING) A WONDERFUL HERBARIUM OF THE IMAGINATION.

MASSIMILIANO GIONI, CURATOR, 55TH VENICE BIENNALE

CZECH ARTIST **ANNA ZEMÁNKOVÁ** HAD NO ACADEMIC ART TRAINING. IT WAS HER SON, A PROFESSIONAL SCULPTOR, WHO ENCOURAGED HER TO DEVELOP A DAILY ART PRACTICE. EVERY MORNING, SHE WOULD RISE BEFORE DAWN TO ILLUSTRATE A PRIVATE UNIVERSE. SHE CALLED HER CREATIONS *FLOWERS*. YET THESE DENSE DELICATE WORKS ON PAPER REFLECTED SOMETHING MORE COMPLEX THAN THIS SHORTHAND IMPLIED.

ZEMÁNKOVÁ'S SECRET BOTANY WAS FETED BY THE CZECH CREATIVE COMMUNITY. PLAYWRIGHT **VÁCLAV HAVEL** AND FILMMAKER **JAN ŠVANKMAJER** ACQUIRED HER WORKS AS DID ARTIST **ARNULF RAINER** AND **LA COLLECTION DE L'ART BRUT**. YET FOR THE MOST PART, **ZEMÁNKOVÁ** REMAINED UNKNOWN AND UNSEEN OUTSIDE THE EASTERN BLOC.

IN 2011, CURATOR **MASSIMILIANO GIONI** DISCOVERED **ZEMÁNKOVÁ**, INCLUDING HER IN *OSTALGIA* AT THE **NEW MUSEUM** IN NEW YORK. THEN, IN 2013, HE CELEBRATED THE ARTIST'S OEUVRE BY INSTALLING OVER A DOZEN ORIGINAL WORKS IN THEIR OWN GALLERY AS PART OF *THE ENCYCLOPAEDIC PALACE* AT THE **55TH VENICE BIENNALE**.

ACM

B 1951 (FRANCE)

LEAN FORWARD AND ENTER A MINIATURE, MOLDERING WORLD (WHERE) EACH PIECE CASTS ITS SPELL.

ROBERTA SMITH, ART CRITIC, NEW YORK TIMES

ACM IS THE ACRONYM OF A MYTHIC FRENCH SCULPTOR, WHOSE MINATURE ARCHITECTURES HAVE LONG BEEN PRIZED BY A SELECT GROUP OF COLLECTORS AND MUSEUMS.

ACM QUIT ART SCHOOL TO SETTLE IN THE REMOTE VILLAGE OF HIS CHILDHOOD, WHERE HE EMBARKED UPON A LIFETIME OF ACCUMULATION. WITH THE SUPPORT OF HIS WIFE, WHO HE INCORPORATED INTO HIS CREATIVE IDENTITY, HE FORAGED FOR RAW MATERIALS, FORGOTTEN OBJECTS AND DEFUNCT MACHINERY FOR HIS EVOLVING PRACTICE.

RECYCLING THE GUTS OF DISCARDED TYPEWRITERS, TELEPHONES, CLOCKS AND RADIOS, **ACM** CONSTRUCTED DIZZYING MULTI-PART KINGDOMS, WHERE ELABORATE TOWERS AND PRICKLY ALLEYWAYS CAST A HYPNOTIC GAZE ON THEIR METALLIC INHABITANTS.

ACM CALLED THEM NOT ARTWORKS, BUT *BOULOTS (JOBS)* - AND UPON THEIR DISCOVERY, THE HITHERTO UNKNOWN ARTIST'S WORK WAS DONATED TO **LILLE MÉTROPOLE MUSÉE D'ART**, WHO THEN COMMISSIONED HIM TO CREATE A MAJOR INSTALLATION. **ACM'S BOULOTS** WERE SOON BEING CHAMPIONED BY COLLECTORS LIKE **ANTOINE DE GALBERT OF MAISON ROUGE**. IN 2013 A RETROSPECTIVE OF OVER 20 WORKS AT **MARC OLIVIER WAHLER'S CHALET SOCIETY** IN PARIS BROUGHT **ACM** TO NATIONAL ATTENTION.

THE GALLERY OF **EVERYTHING**

THE GALLERY OF **EVERYTHING** IS A COMMERCIAL FORUM FOR MASTERWORKS BY NON-TRADITIONAL ARTISTS OF THE 19TH, 20TH AND 21ST CENTURIES. IT AIMS TO INVITE INTERNATIONAL COLLECTORS, CURATORS AND MUSEUMS TO DISCOVER THE ARTISTS IT REPRESENTS, WITH ALL PROFITS GOING TO SUPPORT THE MUSEUM OF **EVERYTHING**.

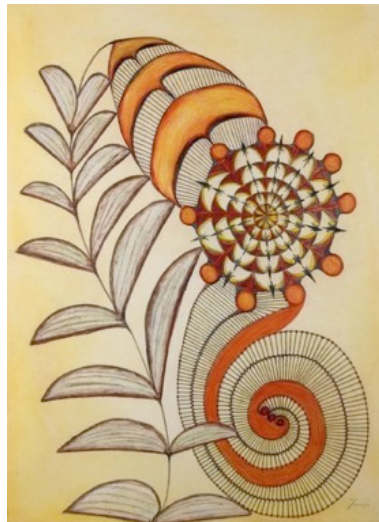
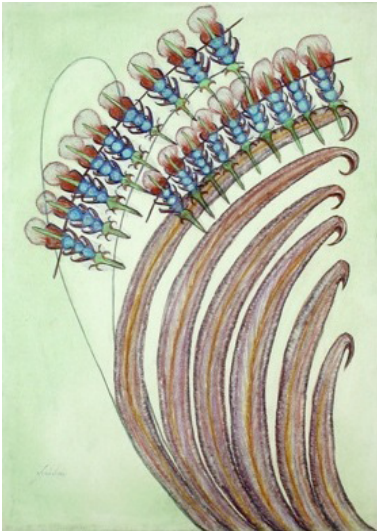
THE MUSEUM OF **EVERYTHING** (WWW.MUSEVERY.COM) IS A UK REGISTERED CHARITY AND THE WORLD'S ONLY TRAVELLING INSTITUTION FOR THE UNTRAINED, UNINTENTIONAL, UNDISCOVERED AND UNCLASSIFIABLE ARTISTS OF THE MODERN ERA.

FOR PRESS, PLEASE EMAIL PR@MUSEVERY.COM OR VISIT WWW.GALLEVERY.COM.

THE GALLERY OF
EVERYTHING

AT **FRIEZE MASTERS**
15TH TO 20TH OCTOBER 2013
REGENTS PARK, LONDON NW1

ANNA ZEMÁNKOVÁ



SELECTED EXHIBITIONS

IL PALAZZO ENCICLOPEDICO, LA BIENNALE DI VENEZIA, VENICE 2013

EXHIBITION #1.1, THE MUSEUM OF **EVERYTHING**, CHALET SOCIETY, PARIS 2012/13

OSTALGIA, NEW MUSEUM, NEW YORK 2011

EXHIBITION #1, THE MUSEUM OF **EVERYTHING**, LONDON 2009/10

INNER WORLDS OUTSIDE, WHITECHAPEL GALLERY, LONDON 2006

ART UNSOLVED, IRISH MUSEUM OF MODERN ART, DUBLIN 1998

EXOTIC SPECIES: THE ART OF ANNA ZEMÁNKOVÁ, HIGH MUSEUM OF ART, ATLANTA 1997

COLECTIE ARNULF RAINER MUSEUM DE STADSHOF, ZWOLLE 1996

SÃO PAULO BIENNALE, SÃO PAULO 1981

OUTSIDERS, HAYWARD GALLERY, LONDON 1979

ACM



SELECTED EXHIBITIONS

INNER JOURNEYS, MAISON PARTICULIÈRE, BRUSSELS 2013

EXHIBITION #1.1, THE MUSEUM OF **EVERYTHING**, CHALET SOCIETY, PARIS 2012/13

AINSI SOIT-IL, COLLECTION ANTOINE DE GALBERT - EXTRAITS, MUSÉE DES BEAUX-ARTS DE LYON, 2011/12

AMERICAN VISIONARY ART MUSEUM, BALTIMORE, MARYLAND, 2010

WORLD TRANSFORMERS, SCHIRN KUNSTHALLE, FRANKFURT, 2010

EXHIBITION #1.1, THE MUSEUM OF **EVERYTHING**, LONDON 2009/10

IM RAUSCH DER KUNST, MUSEUM KUNSTPALAST, DÜSSELDORF 2005

PAVILLON DES ARTS, PARIS / ABCD, UNE COLLECTION D'ART BRUT, PARIS 2004

LES CHEMINS DE L'ART BRUT, LILLE METROPOLE MUSEE D'ART, LILLE, 2003

LA PLANÈTE EXILÉE: ART BRUT ET VISION DU MONDE, LILLE METROPOLE MUSEE D'ART, LILLE, 2001

DE STADSHOF MUSEUM, ZWOLLE, 1999

COLLECTION DE L'ARACINE, LILLE METROPOLE MUSEE D'ART, LILLE, 1997